

FTR Solutions Pvt. Ltd.

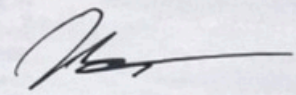
**CONSTRUCTION
MATERIALS &
SOLUTIONS**





MISSION STATEMENT

At **FTR Solutions**, performance is the responsibility of the material—not an excuse left to execution. Our mission is to engineer and supply products that perform reliably on site, independent of workmanship variability.



Managing Director



ABOUT US

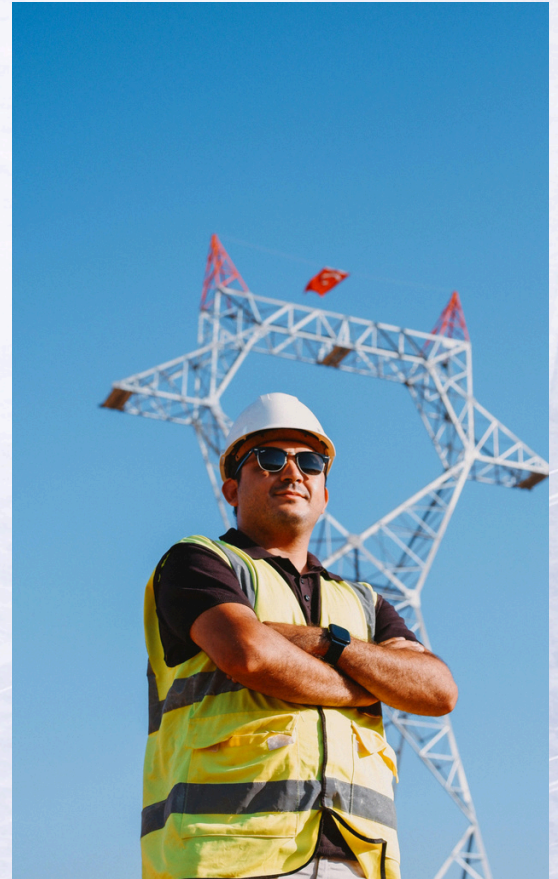


FTR Solutions Pvt. Ltd. is an application-driven materials and solutions company focused on addressing structural, surface, and finishing challenges in contemporary construction. Founded by professionals with deep on-site and technical experience, the company develops products engineered for performance reliability, substrate compatibility, and execution efficiency. Our solutions are formulated to meet defined functional parameters, including adhesion, flexibility, strength development, durability, and environmental resistance.

Product development is guided by field conditions, testing protocols, and real-world performance rather than theoretical claims.

Quality control at FTR Solutions is embedded across sourcing, formulation, and production stages, supported by continuous process improvement and technical validation. We follow disciplined manufacturing practices to ensure batch consistency and predictable application behavior.

FTR Solutions maintains a rational pricing approach aligned with technical value, enabling long-term deployment across projects. Our focus remains on delivering engineering-ready solutions that perform as intended on site.



SIGNATURE SERIES

- ERP Fiber** - Elastomeric Repair Plaster-Fiber
- ERP Smooth** - Elastomeric Repair Plaster
- Block Bond** - Black & Tile Mortar
- No Rust** - Corrosion Protection Primer
- NoSeep-1** - Elastomeric Membrane Waterproofing
- NoSeep-2** - Elastomeric Membrane Waterproofing



DISTEMPER

- DOOK** - Oil Bound Distemper
- SYNC** - Acrylic Distemper
- SNOOK** - Economical Emulsion



INTERIOR EMULSION

- ZEN** - Premium Washable Emulsion
- DILKY** - Luxury Sheen Emulsion



EXTERNAL EMULSION

- ALFA** - Economical Emulsion
- ALFA PLUS** - PLUS Premium Exterior
- NO MOSS** - Anti Fungal Emulsion



WOOD COATINGS - CLEAR

- MILES** - Melamine Sealer
- MILES** - Melamine Matt
- MILES** - Melamine Gloss
- POLO** - PU SEALER
- POLO** - PU MATT
- POLO** - PU GLOSS

TEXTURE FINISHES

- Rustex** - Rugged Texture Finish
- Rolex** - Roller Texture Finish
- Spray Dots** - Spray Texture Coat
- Stone Finish** - Natural Stone Texture Finish



ENAMEL PAINTS

- Marty** - Matt Enamel
- Glow** - Glossy Enamel

PU COLOURED

- Woody** - All purpose wood putty
- Micro** - Colour Matt
- Micro** - Colour Gloss
- Polo** - PU Colour Matt
- Polo** - PU Colour Gloss



SEALANTS & SURFACE PROTECTION

- Tile Grout** - Available in Various Colours
- Elastomeric Sealant** - Available in Various Colours
- Seal - X** - Silicone Water Repellent

APPLICATION AIDS

- Magic Mask** - Masking Material



SIGNATURE SERIES



Minimalist
luxury



ERP

ELASTOMERIC REPAIR PLASTER

CHARACTERISTICS:

- High Flexibility
- Crack Bridging Ability
- Strong Adhesion to Concrete
- Water Resistant
- Durable & Long-Lasting
- Suitable for Structural Repairs



Features:



UTILITY AREA

- Gypsum board Cement board and panels Calcium silicate board MDF boards
- Wooden plywood
- Precast construction AAC blocks and panels Pre-painted surfaces Pre-engineered buildings
- Retrofitting application



Block Bond

Block & Tile Mortar



CHARACTERISTICS

- High bonding strength
- Excellent adhesion to blocks and tiles
- Smooth and easy application
- Crack-resistant formula
- Water-resistant properties
- Suitable for internal and external use
- Long-lasting durability
- Ready to mix and apply



No Rust

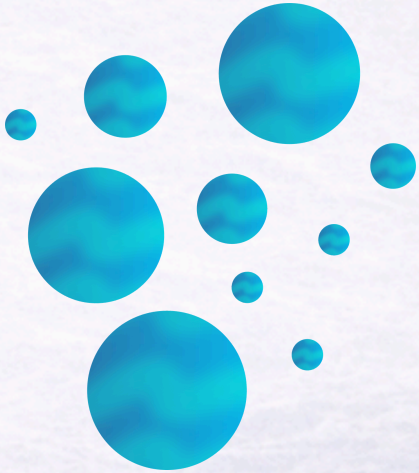
Corrosion Protection Primer



CHARACTERISTICS

- Strong anti-corrosion protection
- Prevents rust formation on steel
- Excellent adhesion to metal surfaces
- Fast drying formula
- Improves durability of structures
- Suitable for indoor and outdoor use
- Easy to apply by brush or spray
- Long-lasting protective coating

w



Water Proofing

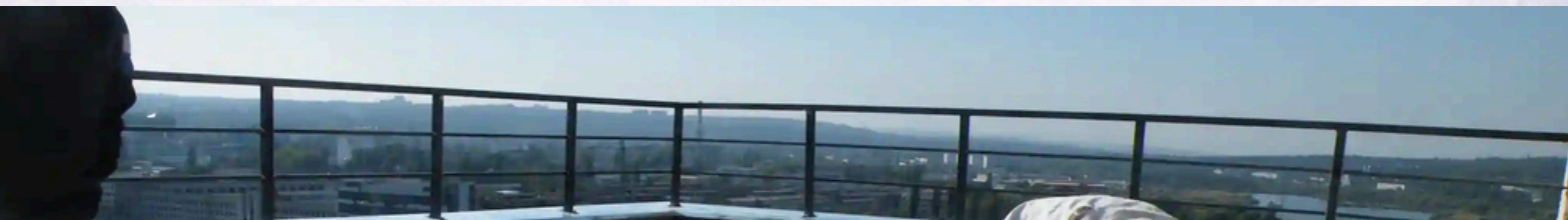


NoSeep - 1

Elastomeric Membrane Waterproofing



- ➔ FLEXIBLE COATING
- ➔ ANTI-DAMP
- ➔ CRACK-BRIDGING
- ➔ UV RESISTANT



Can be used for terrace and roof waterproofing.



NoSeep-1 is a single component elastomeric waterproof coating. It penetrates into surface pores and forms a seamless flexible membrane. It provides long-lasting protection against water leakage and dampness.

APPLICATION PROCEDURE

- Clean the surface of dust, oil and loose particles.
- Stir well before use.
- Apply NoSeep-1 with brush or roller in uniform direction.
- Apply in two coats with 6-8 hours gap between coats.
- No dilution required.

UTILITY AREA

- Terrace
- Roof slabs
- Balcony
- Parapet walls
- Exterior walls
- Sunken Areas



NoSeep - 2

FTR ✓
First Time Right

Elastomeric Membrane Waterproofing

- ➔ HIGH ELASTICITY
- ➔ WATER PRESSURE RESISTANT
- ➔ STRONG BONDING
- ➔ DURABLE PROTECTION



Can be used for internal and external waterproofing.



APPLICATION PROCEDURE

1. Apply **NoSeep 2** to a maximum thickness of approximately 2 mm.
2. While the surface is still wet affix the nylon mesh properly over the coated area.
3. Press the mesh gently to ensure proper embedding into the material.
4. Remove excess material and level the surface evenly.
5. Allow the surface to dry for 6-8 hours.
6. Apply one additional coat of **NoSeep 2** over the surface. ensure that the mesh is concealed as much as possible to achieve a smooth and uniform finish.

UTILITY AREA

- Bathroom
- Basements
- Water Tank
- Swimming pools
- Sunken areas
- Lift pits



DISTEMPER

*Enhance warmth
and beauty in every corner.*



DOOK

FTR ✓
First Time Right

Oil Bound Distemper Characteristics

- Smooth matte finish
- Easy to apply
- Quick drying
- Good whiteness
- Cost-effective solution
- Long-lasting performance



SYNC

Acrylic Distemper Characteristics

- Smooth matte finish
- Good coverage
- Bright and long-lasting colours
- Easy brush or roller application
- Quick drying
- Low maintenance interior coating

SNOOK

Economical Emulsion Characteristics

- Smooth finish
- Good coverage
- Bright and uniform colour
- Easy brush or roller application
- Quick drying
- Cost-effective interior paint





INTERIOR



EMULSION



Zen Interior Emulsion

Premium Washable Emulsion

- ➔ SUPERIOR WASHABILITY
- ➔ SMOOTH & RICH FINISH
- ➔ STAIN RESISTANT
- ➔ LONG-LASTING COLOUR



ZEN Premium Washable Emulsion is a high-quality interior paint that provides a smooth, elegant finish with excellent durability. It forms a tough, washable film that resists stains and keeps walls looking fresh for a long time.



Silky

Luxury Sheen Emulsion

- ➔ SILKY SMOOTH FINISH
- ➔ SOFT SHEEN LOOK
- ➔ HIGH WASHABILITY
- ➔ LONG-LASTING COLOUR



Silky Luxury Sheen Emulsion is a premium interior paint that provides a rich, smooth finish with an elegant soft shine. It forms a durable and washable coating that enhances the beauty of walls and keeps them looking fresh for years.



E
X
T
E
R
N
A
L



E
M
U
L
S
I
O
N



Alfa

Economical Emulsion

Characteristics

- Smooth & Matte Finish
- Good Coverage
- Budget Friendly
- Easy Application
- Suitable for Exterior Walls



Alfa Plus

Premium Exterior

Characteristics

- Excellent Weather Resistance
- Superior Colour Retention
- Anti-Algae & Anti-Fungal Protection
- Strong Adhesion on Exterior Surfaces
- Long-Lasting Durable Finish

No Moss

Anti Fungal Emulsion

- ➔ ANTI-FUNGAL PROTECTION
- ➔ MOISTURE RESISTANT
- ➔ SMOOTH MATTE FINISH
- ➔ LONG-LASTING COLOUR
- ➔ STAIN RESISTANT
- ➔ EASY TO CLEAN



Can be used for interior walls in damp and moisture-prone areas

No Moss Anti Fungal Emulsion is a specially formulated interior paint that protects walls from fungus, algae, and mold growth. It creates a smooth and durable coating that keeps walls clean, fresh, and hygienic for a long time.





WOOD

Coatings



M

Melamine Sealer Characteristics

- Excellent Surface Sealing
- Strong Adhesion on Wood
- Smooth Base for Top Coat
- Fast Drying Formula
- Enhances Finish Durability

FTR ✓
First Time Right



I

Melamine Matt Characteristics

- Smooth Matte Finish
- Excellent Surface Sealing
- Good Scratch Resistance
- Fast Drying Formula
- Ideal for Interior Wooden Furniture



L

Mexamine Gloss Characteristics

- High Gloss Finish
- Superior Shine & Clarity
- Strong Surface Protection
- Good Water & Stain Resistance
- Durable & Long-Lasting Coating



E

S



**P
O
L
O**

PU – Selaer

Excellent Surface Sealing
Deep Wood Penetration
Enhances Topcoat Adhesion
Smooth & Even Base Finish
Fast Drying Formula.



PU – Matt

Elegant Matte Finish
Scratch Resistant Coating
Smooth Touch Texture
Long Lasting Protection
Interior & Exterior Use.



PU – Gloss

High Gloss Shine Superior
Surface Protection Water
& Stain Resistant Excellent
Durability Smooth Mirror
Finish.



TEXTURE FINISHES



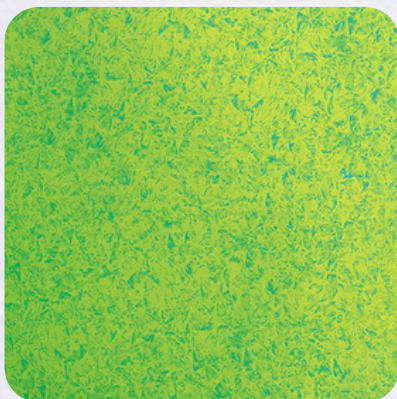
TEXTURE FINISHES



ROUGH TEX
Rugged Texture finish



ROLL ON
Roller Texture finish



Spray Dots
Spray Texture Coat



Stone Finish
Natural Stone Texture Finish

ENAMEL PAINTS



MARTY-MATT ENAMEL

CHARACTERISTICS

- SMOOTH MATT FINISH
- EXCELLENT COVERAGE
- LONG LASTING DURABILITY
- SCRATCH RESISTANT
- WASHABLE SURFACE
- STAIN RESISTANT
- SUPERIOR ADHESION
- EASY APPLICATION
- QUICK DRYING
- INTERIOR & EXTERIOR USE



GLOW-GLOSSY ENAMEL

CHARACTERISTICS

- HIGH GLOSS MIRROR FINISH
- SUPERIOR SURFACE PROTECTION
- EXCELLENT COVERAGE
- LONG LASTING DURABILITY
- SCRATCH RESISTANT COATING
- WATER & MOISTURE RESISTANT
- STAIN RESISTANT SURFACE
- SMOOTH & EVEN APPLICATION
- QUICK DRY FORMULA
- SUITABLE FOR WOOD & METAL



PU-COLOURED



WOODY

ALLPURPOSEWOOD PUTTY

FTR ✓
First Time Right

CHARACTERISTICS

- STRONG BOND
- SMOOTH FINISH
- QUICK DRY
- EASY SANDING
- INTERIOR & EXTERIOR USE



MICRO

COLOUR MATT

CHARACTERISTICS

- SMOOTH MATT
- FINISH EXCELLENT COVERAGE
- RICH COLOUR QUALITY
- DURABLE & LONG LASTING
- EASY APPLICATION



COLOUR GLOSS

CHARACTERISTICS

- RICH GLOSSY PREMIUM APPEARANCE
- STRONG ADHESION ON WOOD & METAL
- FAST DRYING PERFORMANCE
- RESISTANT TO MOISTURE AND CHEMICALS
- PROVIDES LONG-TERM SURFACE PROTECTION



PU

COLOUR GLOSS

CHARACTERISTICS

- HIGH-GLOSS MIRROR FINISH
- SCRATCH & STAIN RESISTANT
- SMOOTH EASY APPLICATION
- LONG-LASTING COLOUR
- FOR DOORS, FURNITURE & METAL

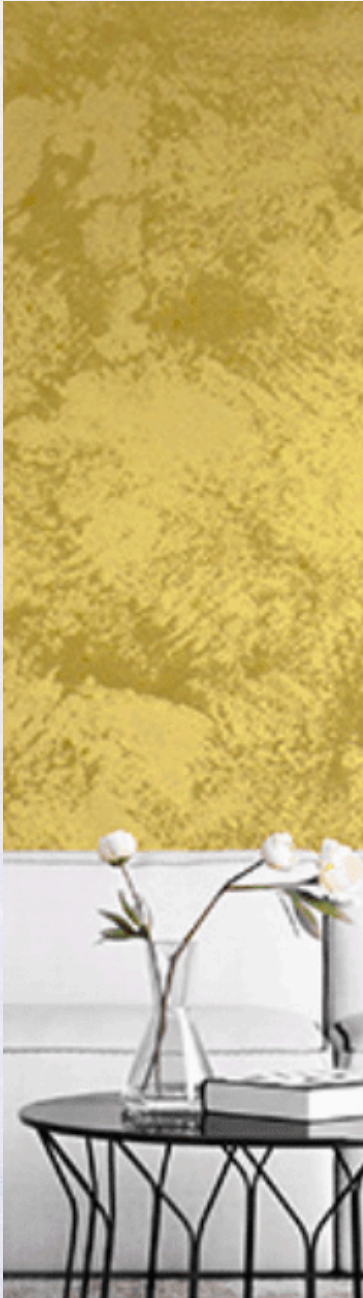
COLOUR MATT

CHARACTERISTICS

- PREMIUM MATTE FINISH
- SOFT SMOOTH SURFACE
- COVERS MINOR FLAWS
- STRONG & WEATHER RESISTANT
- INTERIOR & EXTERIOR USE



SEALANTS & SURFACE PROTECTION



TILE GROUT

AVAILABLE IN VARIOUS COLOURS

- STRONG BONDING WITH TILES
- CRACK RESISTANT FORMULA
- WATER RESISTANT
- SMOOTH AND EASY TO APPLY
- LONG LASTING FINISH



ELASTOMERIC SEALANT

AVAILABLE IN VARIOUS COLOURS

- HIGHLY FLEXIBLE
- EXCELLENT CRACK FILLING ABILITY
- WEATHER RESISTANT
- STRONG ADHESION ON SURFACES
- WATERPROOF PROTECTION
- DURABLE AND LONG LIFE



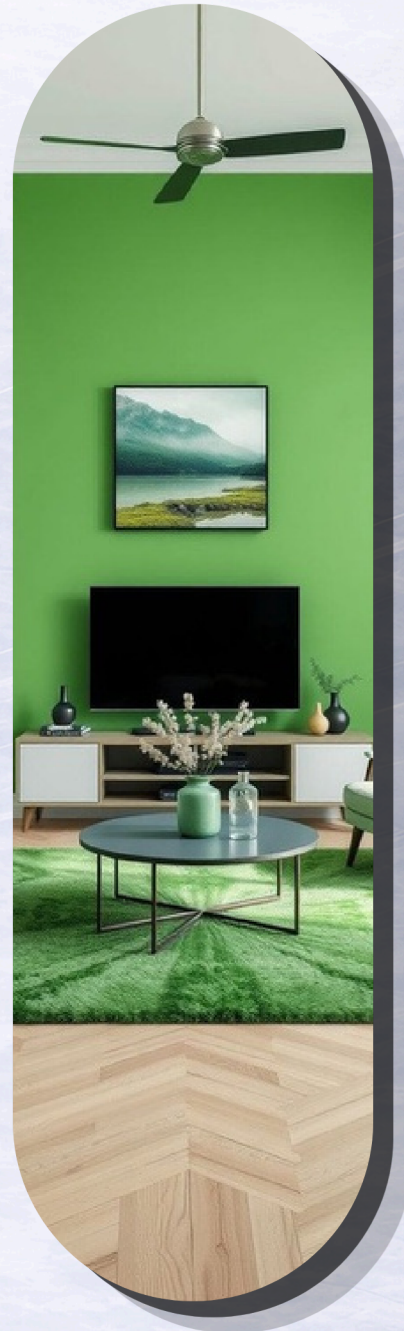
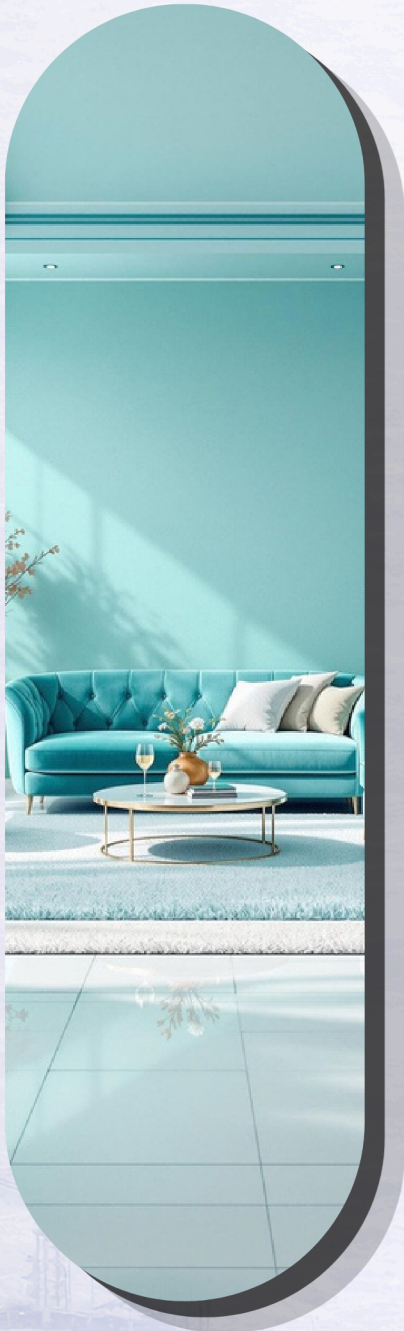
SEAL-X

SILICONE WATER REPELLENT

- SILICONE BASED PROTECTION
- DEEP SURFACE PENETRATION
- WATER REPELLENT TECHNOLOGY
- PREVENTS DAMPNES
- TRANSPARENT FINISH
- LONG TERM PROTECTION



APPLICATION AIDS



MAGIC MASK

MASKING MATERIAL

- EASY TO APPLY AND REMOVE
- CLEAN EDGE FINISHING
- STRONG SURFACE GRIP
- NO RESIDUE AFTER REMOVAL
- PROTECTS FROM PAINT STAINS
- SUITABLE FOR MULTIPLE SURFACES





FTR SOLUTION PVT.LTD

 NEW DELHI,INDIA



INFO@FTR.CO.IN



WWW.FTR.CO.IN



